

10.4" Digital LED Fishfinder

SDF-310

SPECIFICATIONS(SDF-310)

■ GENERAL

- Operating Frequencies : Dual Frequencies(50/200 kHz)
- Output Power : 1/1.2/1.5/2/2.5/3 kW
- Power Reduction : 10 ~ 100 % (in 10 % step)
- User Frequency : 28/38/50/55/68/75/82/88/95/100/107/150/200 kHz(2 Frequencies selection)

■ DISPLAY

- Display : 10.4" color LED (SVGA: 800 x 600)
- Color : 8/16/32/64 color
- Brightness : 500 cd/m²
- Tx Rate : 20 ~ 3000/min
- Pulselength : Standard/Short/Middle/Long
- Rx Band : Narrow/Standard/Wide
- Amplifier : High dynamic range
- Ranges : 3 ~ 3000 m
- Shift : 0 ~ 2000 m
- Display Mode : Single(LF/HF), Dual, Single+Zoom, Custom modes 1,2, Zoom mode(Bottom lock, Bottom zoom, Marker zoom), MIX mode, Nav data, A-scope

- Picture Advance Direction : Left, Right
- Picture Advance Speed : Stop, 1/16, 1/8, 1/4, 1/2, 1/1, 2/1, 4/1
- Alarms : Audio, Fish, Depth, Water temperature, Nav data
- Others : Auto Mode, Color Erase, Interference, TVG, Clutter, Temp Graph, A-scope, White Marke

■ ENVIRONMENTAL CONDITIONS

- Operating Temperature : -15°C ~ +55 °C

■ DATA INTERFACE

- Data Interface : NMEA 0183

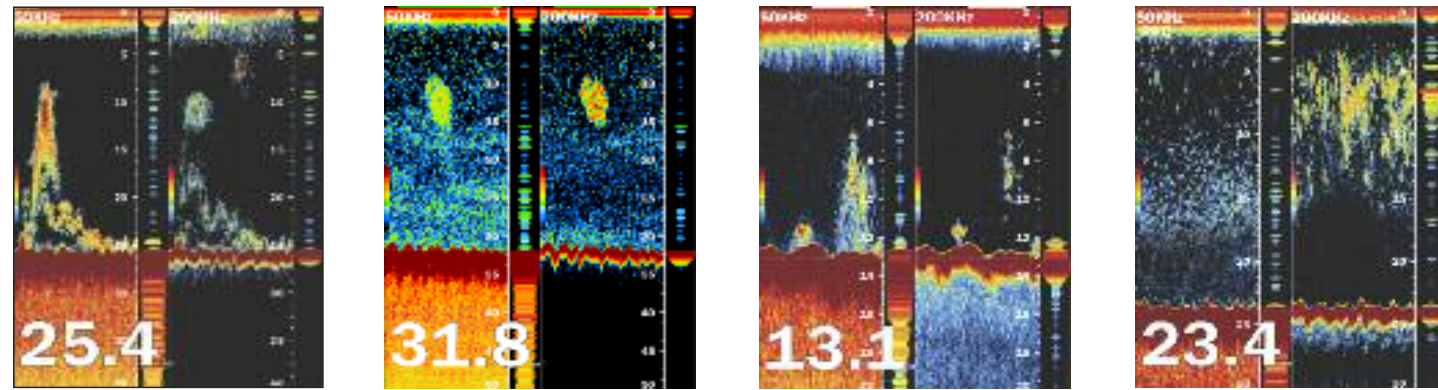
■ POWER SUPPLY

- Power Supply : 12/24 VDC, 50W max.

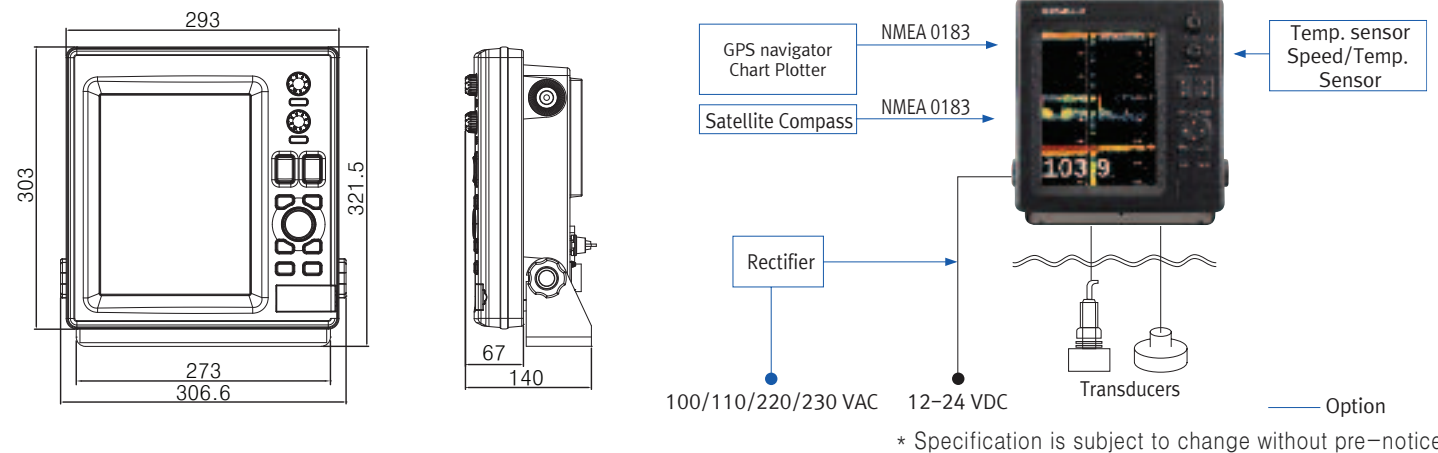
■ EQUIPMENT LIST

- Standard : Display Unit, Transducer(1/1.2/1.5/2/2.5/3KW), Installation Materials and Standard Spare Parts
- Option : Speed/Temperature Sensor, Temperature Sensor NMEA Cable, Rectifier

FISHFINDER SCREEN



DIMENSIONS/CONFIGURATION



10.4" Digital LED Fishfinder SDF-310

28/38/50/55/68/75/82/88/95/100/107/150/200 kHz
1/1.2/1.5/2/2.5/3KW

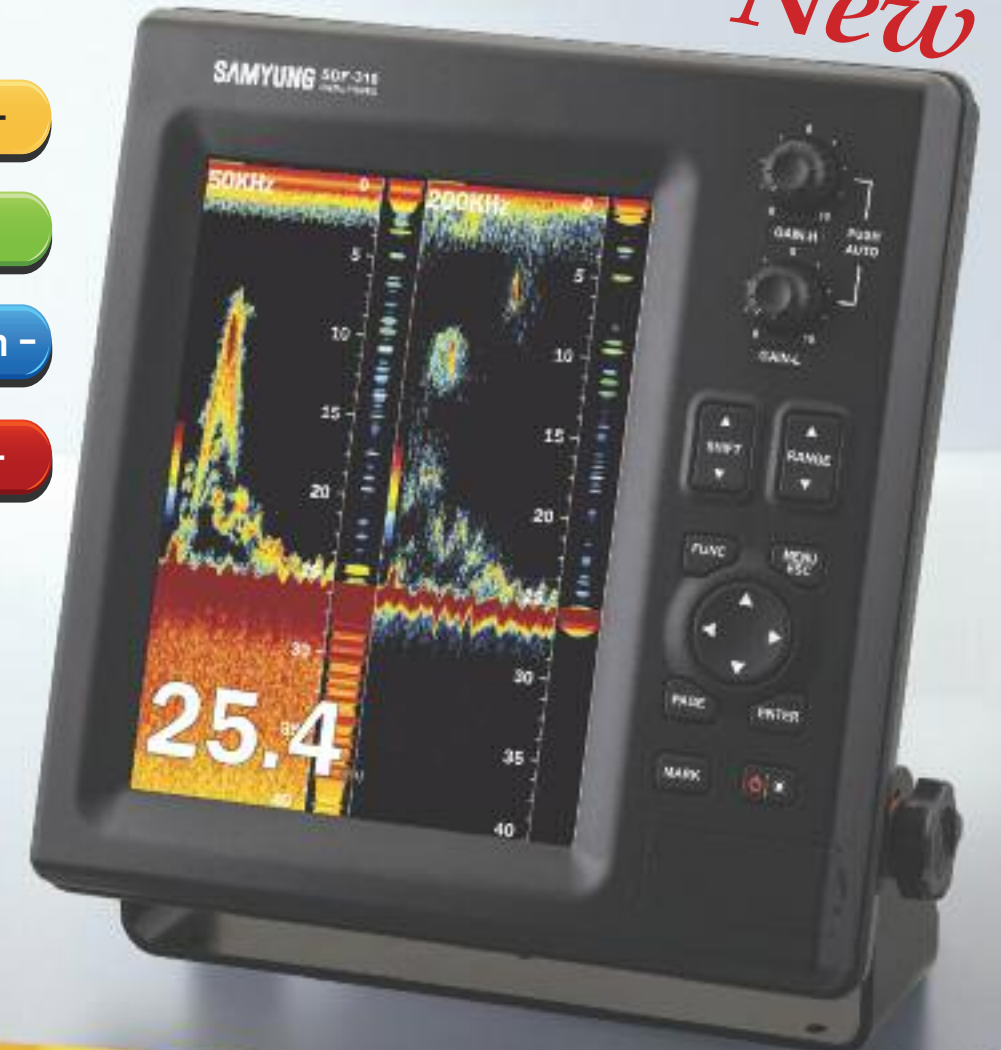
New

- Multi frequency choices -

- Multi output choices -

- Low noise · High resolution -

- Digital filter technology -



Head Office : 69, Sangni-Ro, Youngdo-Gu, Busan, Korea, 606-083
Tel : 82-51-601-5530(Rep.) Fax : 82-51-413-4446
A/S Center : 76, Jeoryeoung-Ro, Yungdo-Gu, Busan, Korea, 606-802
Tel : 82-1577-0198(ARS) Fax : 82-51-416-5515
Http : //www.samyungenc.com

ISO 9001:2000 / KS A 9001:2001
Certificate No. : RQM0645



SAMYUNG ENC Co.,Ltd.



10.4" Digital LED Fishfinder

- Quick Switch of display when changing depth, enlarge, minimize with **high performance CPU**
- **Multi frequency choices** and frequency **fine tuning** function
- **Automatic Pulse output change** allows improved fish school distinguishability
- **Digital filter technology** allows display of weak fish school signal

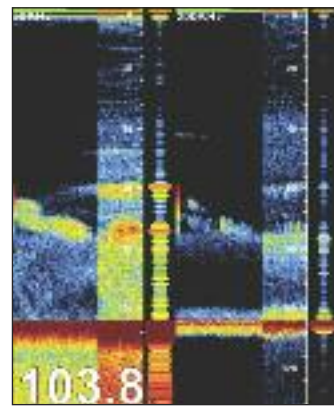


SDF-310

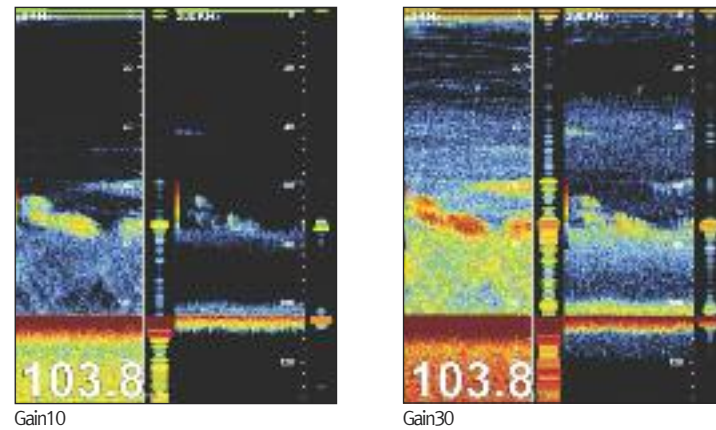
Easy and quick gain setting control

- When gain changes are applied, the previous echoes are applied at the same as the new echoes
- Allows to display weakly recorded fish group

Fish school display to gain change

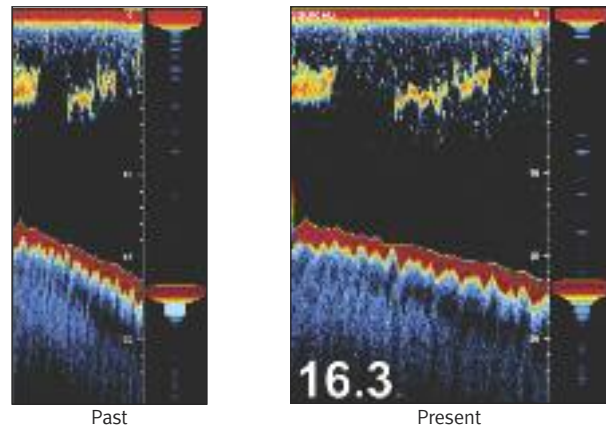


Full display to gain change



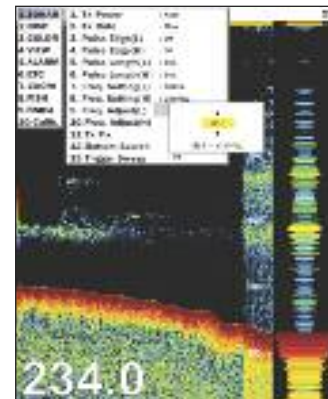
Allows to display weakly recorded fish group

- 30% increase of transmitting speed allows more detailed fish school to be displayed



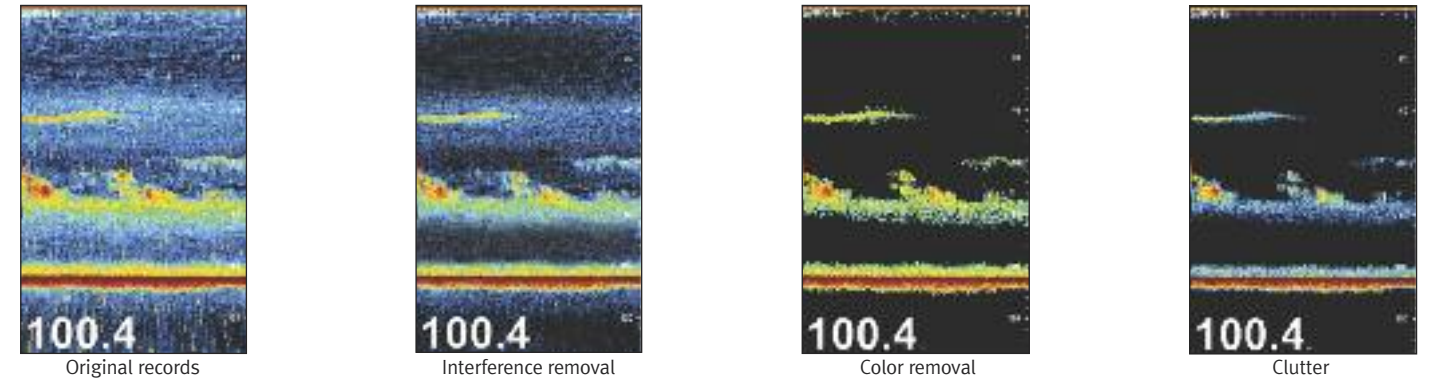
Fine tuning of transmitting frequency

- Fine tuning over all frequencies including low and high transmitting frequencies



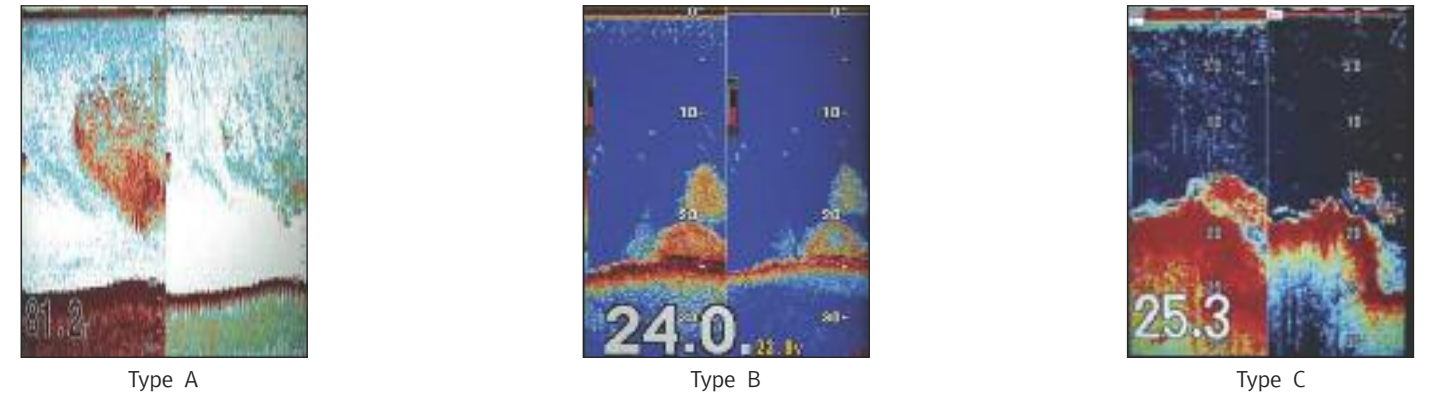
Progressed image processing technology

- Express image with various filtering process : Interference removal, noise removal, clutter, color removal and digital filter area setting



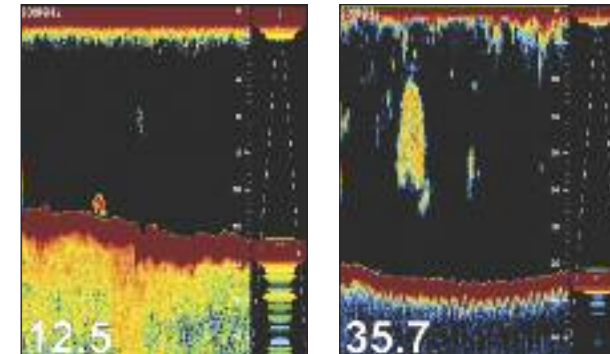
Selectable display color

- Use may select preferable color display



Display area detected on A-SCOPE

- Display area of seabed transmitted by the beam angle from transducer on A-scope to increase ease of work



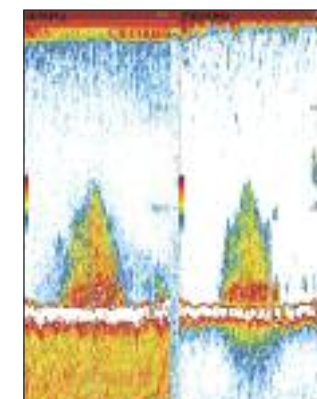
Multi-frequency and the output

- The selection of transducers with various frequencies and output is available
- 28/38/50/68/82/88/107/150/200 kHz
- Dual frequencies
- Transmission output can be selected from 1/1.2/1.5/2.5/3KW
- Connectable with past transducers

* Beam angle may vary depending on the frequency of the transducer and the installation method.
The data displayed on the equipment should be used for reference only

Display white line

- White line applied to easily discern seabed from the fish school or reef



* Display the strong signal from seabed in the white line in order to easily distinguish between fish group and seabed

Digital filter technology

- Digital filter technology applied to display the weakest echoes from small fish and reduce noise at the same time

