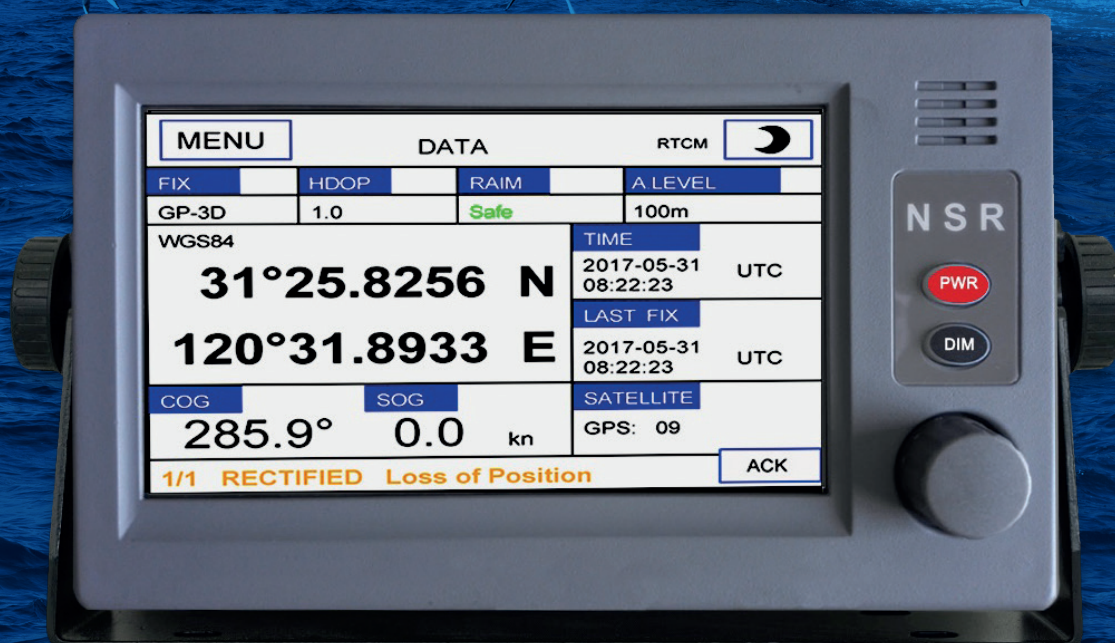




# NGR-3000 MARINE GPS



## NSR'S NEW GENERATION IMO GPS

MED / Wheelmark type approved by DNV-GL

Large 7-inch color LCD display with touchscreen

3 GPS data outputs

INS/BAM input/output

Comprehensive navigation data displays

# NGR-3000 MARINE GPS



The high sensitive NGR-3000 GPS NAVIGATOR tracks up to 50 satellites simultaneously. It ensures optimum accuracy in determination of vessels position, course and speed.

## Features

Comprehensive navigation data displays  
Storage for up to 999 waypoints and 30 routes  
7-inch, color LCD, touchscreen operation with adjustable contrast and brilliance  
Dedicate port for BAM/INS connection

3 GPS data outputs  
DGPS beacon receiver (external) for DGPS function  
Fully complying with latest international regulations  
IMO MSC112 (73), MSC302(87), IEC61108-1, IEC62923-1(2018), IEC62923-2(2018)

## Specifications

### GPS Receiver

Receiving System: 50 channels parallel (GPS)  
Rx Frequency: 1575.42 MHz  
Rx Code: C/A code  
Position Accuracy: Approx. 10m (GPS), 95% of the time, horizontal dilution of position (HDOP)  $\leq 4$   
Tracking Velocity: 999 kts  
Position-fixing Time: Warm start: 15 seconds, Cold start: 120 seconds  
Position Update Interval: 1 second

### Display

Display: 7-inch, color LCD, touchscreen operation  
Fix Mode: GPS  
Alerts: Lost of Position, HDOP > 4, DGPS lost

### Input/Output Data

Output Data: RS422, totally 3 ports,

Baud Rate 4800/9600/19200 bps  
Sentences: GNS, GBS, GGA, RMC, VTG, ZDA, DTM  
INS connection: INS IN/INS OUT, RS422  
Input Data: DGPS RTCM SC-104

### Power supply

12-24 VDC, 0.25-0.50 A

### Environment condition

Ambient Temperature: Antenna Unit: -25°C to +70°C  
Main Unit: -15°C to +55°C  
Relative Humidity: 95% at 40°C  
IP grade: Antenna unit: IPX6, Main unit: IP22

### Size

145(H) x 264(W) x 80(D) mm

### Weight

abt 2 kg (main unit)

## Equipment list

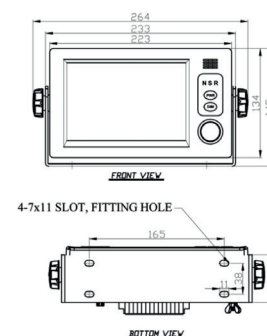
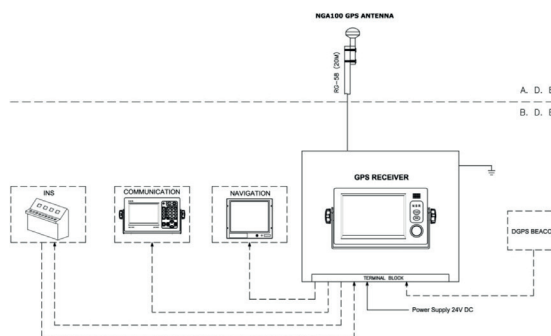
### Standard

NGR-3000 Main Unit: 1 set  
GPS Antenna with Cable: 1 pc  
Installation Materials: 1 set

### Options

DGPS Beacon: 1 set  
Flush Mount Brackets: 1 set  
NMEA Distribution Box: 1 set

## System diagram and dimensions



## Distributor



More information at [rcom.nl](http://rcom.nl)  
+31 (0)180 - 62 24 42

## Manufacturer

New Sunrise Co., Ltd.  
[nsrmarine.com](http://nsrmarine.com)

